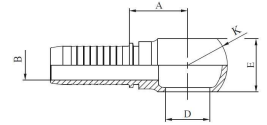


O20310

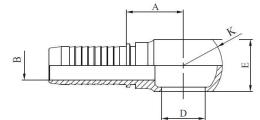
OJAL / BANJO BSP



REF.	DIÁMETROS DE MANGUERA			ROSCAS T	DIMENSIONES				
	DN	Pulgadas	Tamaño		B	A	D	E	K
O20310-04-04	6	1/4"	- 04	1/4" - 19	4,1	22	13,3	14,0	24,0
O20310-04-06	6	1/4"	- 04	3/8" - 19	4,1	21	16,7	18,0	28,0
O20310-05-04	8	5/16"	- 05	1/4" - 19	5,1	22	13,3	14,0	24,0
O20310-05-06	8	5/16"	- 05	3/8" - 19	5,1	23	16,7	18,0	28,0
O20310-06-06	10	3/8"	- 06	3/8" - 19	7,1	24,1	16,7	18,0	28,0
O20310-06-08	10	3/8"	- 06	1/2" - 14	7,1	27,1	21,2	22,0	35,0
O20310-08-08	12	1/2"	- 08	1/2" - 14	9,6	27,5	21,2	22,0	35,0
O20310-10-10	16	5/8"	- 10	5/8" - 14	12,1	28,2	23,0	23,5	38,0
O20310-12-12	19	3/4"	- 12	3/4" - 14	15,0	36,5	26,7	29,0	45,0
O20310-16-16	25	1"	- 16	1" - 11	20,0	44,5	33,4	36,0	54,0

O20910

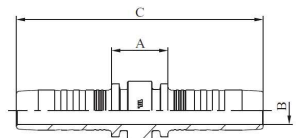
OJAL / BANJO MÉTRICO—DIN 7642



REF.	DIÁMETROS DE MANGUERA			ROSCAS T	DIMENSIONES				
	DN	Pulgadas	Tamaño		B	A	D	E	K
O20910-04-12	6	1/4"	- 04	M12 x 1,5	4,1	21	12,0	12,0	20,0
O20910-04-14	6	1/4"	- 04	M14 x 1,5	4,1	21,5	14,0	14,0	24,0
O20910-05-14	8	5/16"	- 05	M14 x 1,5	5,1	23,1	14,0	14,0	24,0
O20910-06-14	10	3/8"	- 06	M14 x 1,5	7,1	24,1	14,0	14,0	24,0
O20910-06-16	10	3/8"	- 06	M16 x 1,5	7,1	24,1	16,0	18,0	28,0
O20910-06-18	10	3/8"	- 06	M18 x 1,5	7,1	27,1	18,0	20,0	32,0
O20910-08-18	12	1/2"	- 08	M18 x 1,5	9,6	27,5	18,0	20,0	32,0
O20910-08-22	12	1/2"	- 08	M22 x 1,5	9,6	27,5	22,0	22,0	35,0
O20910-10-22	16	5/8"	- 10	M22 x 1,5	12,1	28,2	22,0	23,5	38,0
O20910-12-26	19	3/4"	- 12	M26 x 1,5	15,0	36,5	26,0	29,0	45,0

M10050

CONECTOR DOBLE / UNIÓN DE MANGUERAS



REF.	DIÁMETROS DE MANGUERA			ROSCAS	DIMENSIONES		
	DN	Pulgadas	Tamaño		B	A	C
M10050-03-03	5	3/16"	- 03	-	3,0	15,5	58,5
M10050-04-04	6	1/4"	- 04	-	4,0	14,0	69,0
M10050-05-05	8	5/16"	- 05	-	5,5	14,0	70,0
M10050-06-06	10	3/8"	- 06	-	7,0	14,7	73,5
M10050-08-08	12	1/2"	- 08	-	9,3	15,8	78,0
M10050-10-10	16	5/8"	- 10	-	12,5	15,4	84,0
M10050-12-12	19	3/4"	- 12	-	15,0	18,5	91,5
M10050-16-16	25	1"	- 16	-	19,8	22,6	119,0
M10050-20-20	31	1.1/4"	- 20	-	26,0	23,0	128,0
M10050-24-24	38	1.1/2"	- 24	-	32,0	23,5	147,5